

■ Features

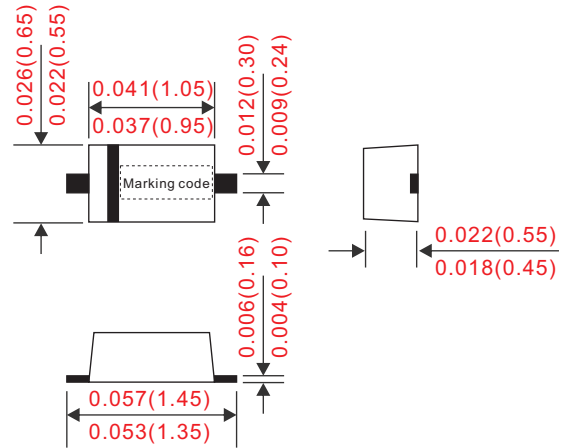
- Fast switching speed.
- Electrically identical to standard JEDEC.
- Surface mount package ideally suited for automatic insertion.
- Tiny plastic SMD package.
- Silicon epitaxial planar chip.
- Suffix "G" indicates Halogen-free part, ex. 1SS400GG.
- Lead-free parts meet environmental standards of MIL-STD-19500 /228

■ Mechanical data

- Epoxy: UL94-V0 rated flame retardant
- Case : Molded plastic, SOD-723
- Terminals : Solder plated, solderable per MIL-STD-750, Method 2026
- Polarity : Indicated by cathode band
- Weight : Approximated 0.00077 gram

■ Outline

SOD-723



■ Maximum ratings and electrical characteristics

Rating at 25°C ambient temperature unless otherwise specified. Single phase, half wave, 60Hz, resistive or inductive load. For capacitive load, derate current by 20%.

Parameter	Symbol	1SS400G	UNIT
Marking code		3	
Peak reverse voltage	V_{RM}	90	V
DC reverse voltage	V_R	80	
Average rectifier forward current	$I_{F(AV)}$	100	mA
Peak forward surge current @t = 1s	I_{FSM}	500	
Junction temperature	T_J	125	°C
Storage temperature	T_{STG}	-55 ~ +125	

Parameter	Conditions	Symbol	MIN.	TYP.	MAX.	UNIT
Forward voltage	$I_F = 100mA$	V_F			1.2	V
Reverse leakage	$V_R = 80V$	I_R			0.1	uA
Capacitance between terminals	$V_R = 0.5V, f = 1MHz$	C_T			3.0	pF
Reverse recovery time	$V_R = 6V, I_F = 10mA, R_L = 100\Omega$	T_{rr}			4.0	ns

Rating and characteristic curves

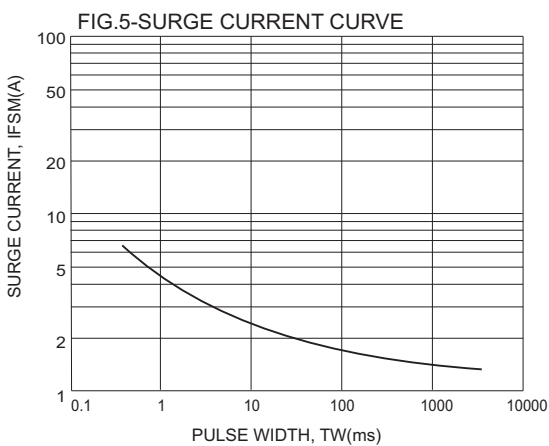
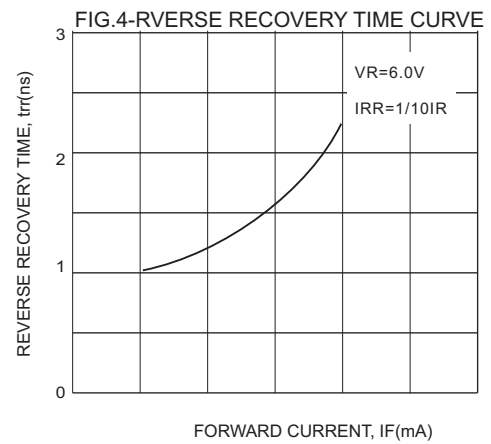
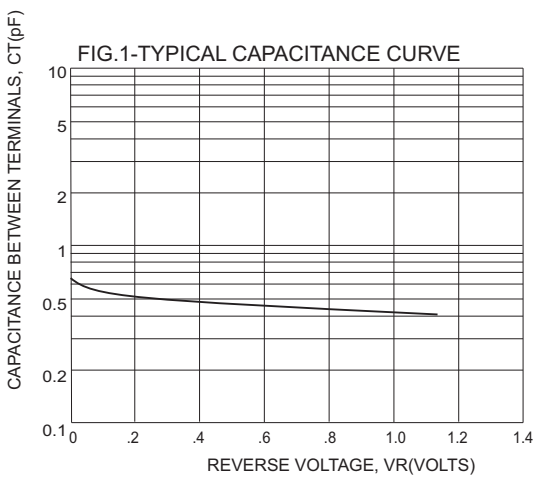
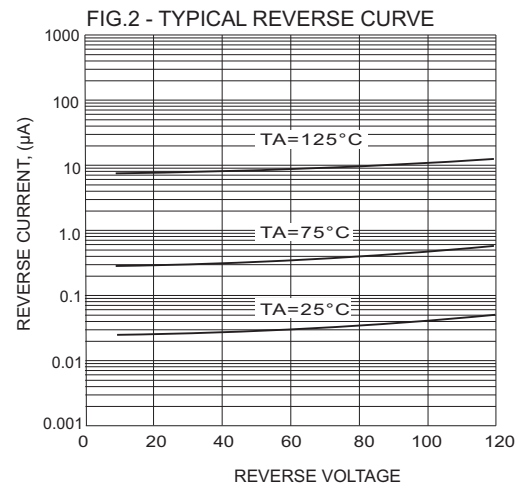
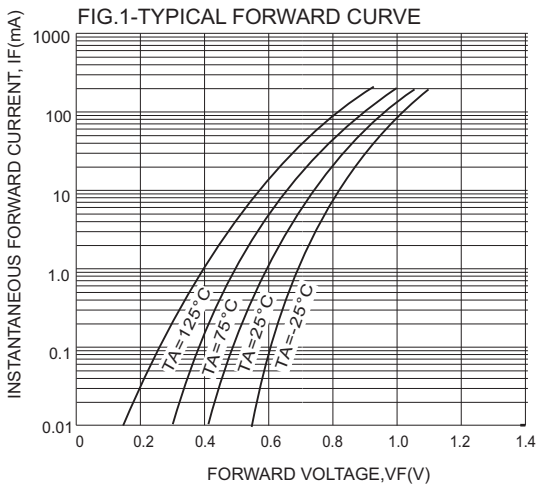
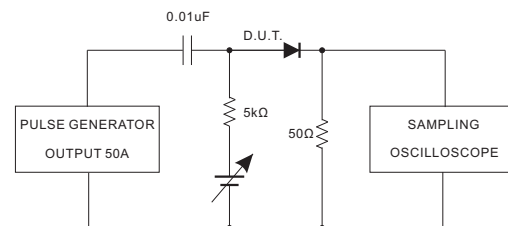
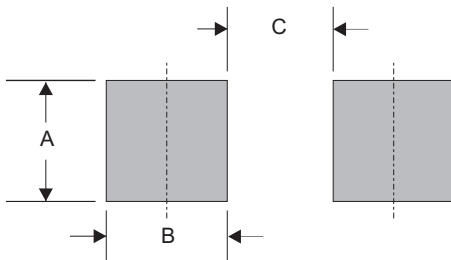


FIG.6-REVERSE RECOVERY TIME MEASUREMENT CIRCUIT



■ SOD-723 foot print



A	B	C
0.018 (0.45)	0.020 (0.50)	0.035 (0.90)

Dimensions in inches and (millimeters)

- CITC reserves the right to make changes to this document and its products and specifications at any time without notice.
- Customers should obtain and confirm the latest product information and specifications before final design, purchase or use.
- CITC makes no warranty, representation or guarantee regarding the suitability of its products for any particular purpose, nor does CITC assume any liability for application assistance or customer product design.
- CITC does not warrant or accept any liability with products which are purchased or used for any unintended or unauthorized application.
- No license is granted by implication or otherwise under any intellectual property rights of CITC.
- CITC products are not authorized for use as critical components in life support devices or systems without express written approval of CITC.