

用途:用于开关、反相电路、界面电路以及驱动电路中。

Purpose: Switching, inverter circuit, interface circuit and driver circuit applications.

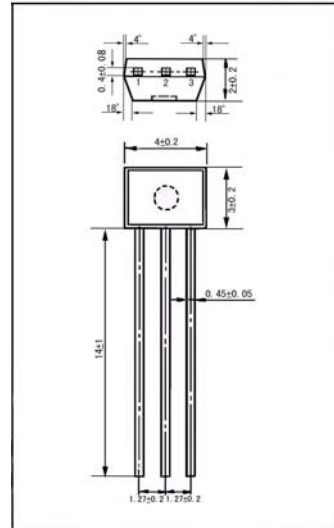
特点:内装偏置电阻, 简化线路设计, 减少元件和制造流程。

Features: With built-in bias resistors, simplify circuit design, reduce a quantity of parts and manufacturing process.

极限参数/Absolute maximum ratings ( $T_a=25^\circ\text{C}$ )

参数符号 Symbol	数值 Rating	单位 Unit
$V_{CB0}$	50	V
$V_{CE0}$	50	V
$V_{EB0}$	10	V
$I_C$	100	mA
$P_C$	300	mW
$T_j$	150	$^\circ\text{C}$
$T_{stg}$	-55~150	$^\circ\text{C}$

TO-92S 单位:mm

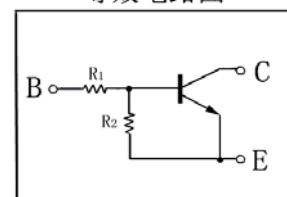


引脚: 1. E 2. C 3. B

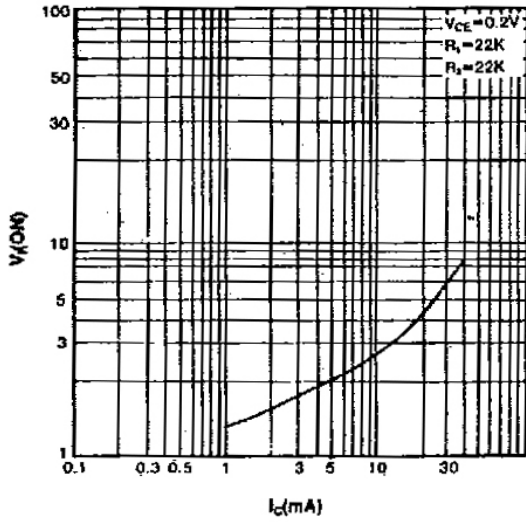
电性能参数/Electrical characteristics ( $T_a=25^\circ\text{C}$ )

参数符号 Symbol	测试条件 Test condition	数值 Rating			单位 Unit
		最小值 Min	典型值 Typ	最大值 Max	
$V_{CB0}$	$I_C=10\ \mu\text{A}$ $I_E=0$	50			V
$V_{CE0}$	$I_C=100\ \mu\text{A}$ $I_B=0$	50			V
$I_{CB0}$	$V_{CB}=40\text{V}$ $I_E=0$			0.1	$\mu\text{A}$
$h_{FE}$	$V_{CE}=5.0\text{V}$ $I_C=5.0\text{mA}$	56			
$V_{CE(sat)}$	$I_C=10\text{mA}$ $I_B=0.5\text{mA}$			0.3	V
$f_T$	$V_{CE}=5.0\text{mA}$ $I_C=10\text{V}$		250		MHz
$C_{ob}$	$V_{CB}=10\text{V}$ $I_E=0$ $f=1.0\text{MHz}$		3.7		pF
$V_{I(off)}$	$V_{CE}=5.0\text{V}$ $I_C=100\ \mu\text{A}$	0.5			V
$V_{I(on)}$	$V_{CE}=0.2\text{V}$ $I_C=5.0\text{mA}$			3.0	V
$R_1$		15	22	29	K $\Omega$
$R_1/R_2$		0.9	1.0	1.1	

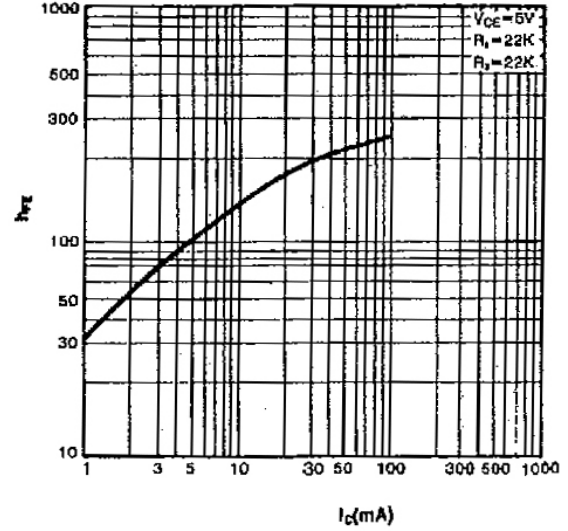
等效电路图



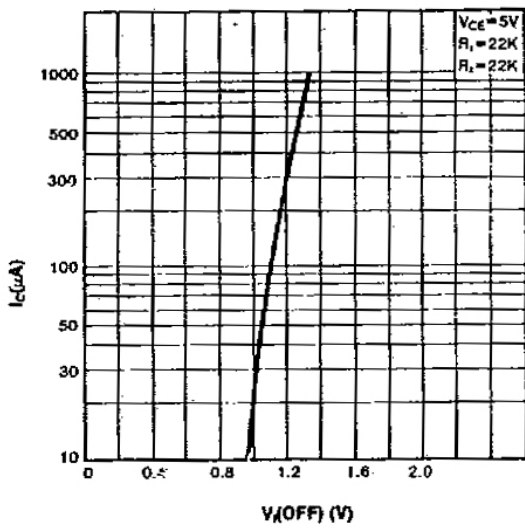
$V_I(ON) - I_C$



$h_{FE} - I_C$



$I_C - V_I(OFF)$



$P_D - T_A$

